

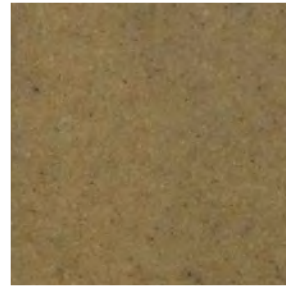
Café Tables

Polymer concrete solutions

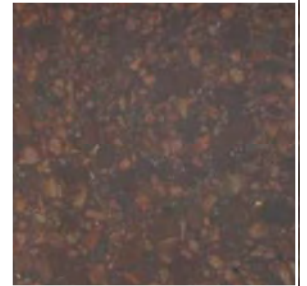
Table Specifications



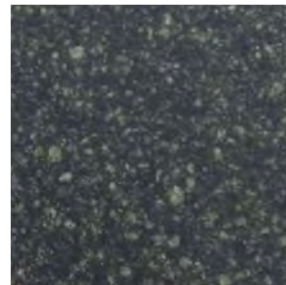
Color Selections



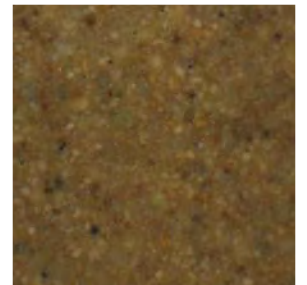
Sandstone



Red Limestone



Grey Granite



Natural Stone

Benefits

- Absorption rate: 0%
- Compressive strength: 14,000psi
- High tensile & flexural strength
- Chemical resistance
- Waterproof
- Less susceptible to chips & cracks
- Natural stone that will not fade
- Corrosion resistant
- Reduced permeability
- No freeze-thaw damage



Order Information

Color Selections

- Sandstone
- Red Limestone
- Grey Granite
- Natural Stone

Table Top Size

- Standard: Rectangular 40" x 21 "
- Standard: Rectangular 45" x 27 "
- Custom: _____ " x _____ "
 - Square
 - Rectangular
 - Round

Custom Logo

- Imbedded logo
 - Customer to provide digital artwork
 - Pricing based on supplied artwork
 - Additional charge for creating/modifying artwork

Table Base

- Standard: Cast Iron-Black [Shown below]
- Custom: _____



Customer Approval

By signing below you are approving the specification for the table.

Name

Date

Available exclusively at
Sidley Builders' Centers

